

Prevent Total Hardness

# Water Improver



End of  
Scale, Rust, and Algae

Easy  
Online Installation

Use for Hot or Cold water  
systems in  
Domestic, Industry,  
Agriculture or, Commercial  
settings



ANANTUDYOG

[www.anantudyog.com](http://www.anantudyog.com)

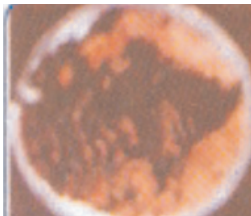
## PTH Water Improver (WI) - A Perfect Solution

- Drastically Improves quality of water
- Revolutionary Technology eliminates need of chemicals, thus preventing pollution
- Reliable, Hassle-free and Cost-effective



### Need for Water Improver

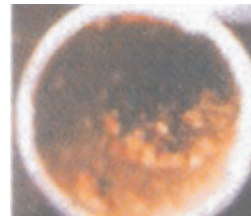
- Prevents Scale and Rust.
- Prolongs the life of pipes and equipment
- Increases water pressure and water flow
- Prevents Algae formation and reduces the need for agents such as chlorine
- Removes existing scale, rust and algae in older systems
- Prevents clogging of water systems
- Prevents leaks
- Enables optimum utilization of energy and results in savings



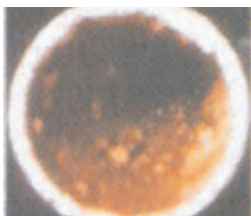
16.12.2000



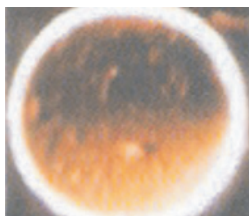
26.12.2000



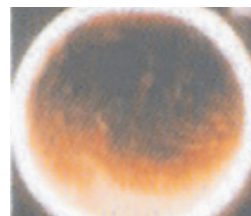
05.01.2001



29.01.2001



20.02.2001



05.03.2001

Photos showing reduction in scale and rust over a period of few months after installation of WI



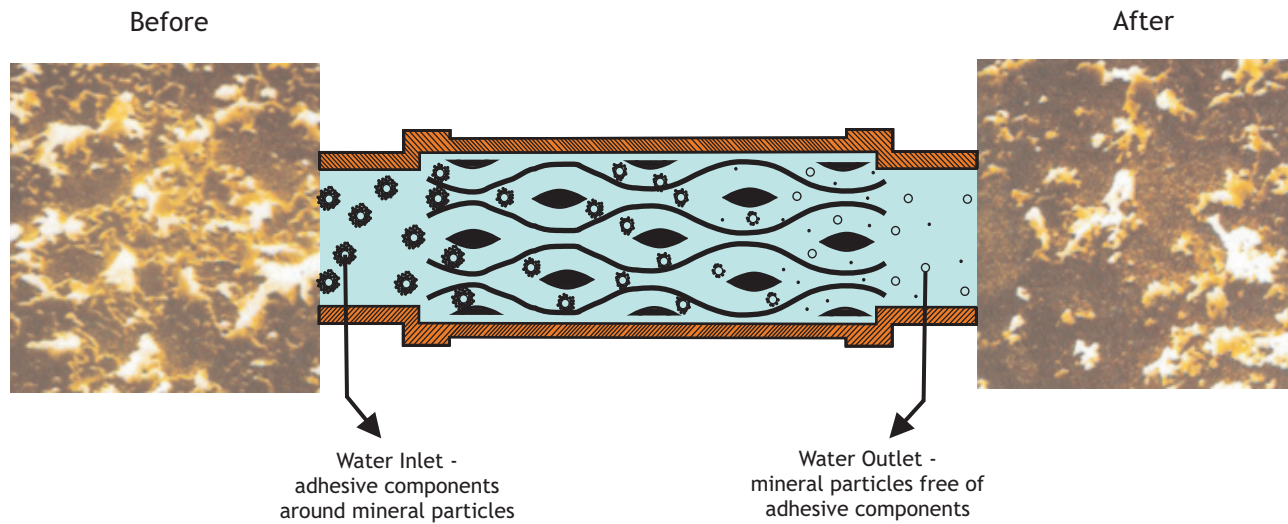
Reliable

Hassle-free

Cost-Effective

## How it Works

- The WI is made of two parts, a stainless steel cylinder and an inner core of noble and semi-noble metal alloy. This results in weak electric fields due to electric potential difference between the core and the metallic cylinder.
- The unique configuration of the core produces venturic effects, that prevent the sticking together of waterborne mineral particles, mainly hardness causing carbonic salts of calcium and magnesium.
- These electro and hydrodynamic forces separate the molecules which bind mineral particles.
- Due to the "separation" that takes place during conditioning, the adhesion of minerals and salts is reduced and most adverse effects of hard water are eliminated.



View of mineral particles from electron microscope showing visible separation between individual particles.

## The WI Advantage

- Functions indefinitely without part replacement
- Absolutely no maintenance costs
- Requires no energy or chemicals for its operation
- Does not release any metals in water so is ecologically safe
- Installed on your water line
- Connected to earth grounding



**No Electricity**



**No Moving Parts**



**No Chemicals or Cartridges**



Alloy Core



## WI for reduction of Algae and other Microorganisms

- WI helps in increasing the efficiency of the disinfectants and reduction in quantities of chlorine required by upto 30%.
- The electrical potential of the WI interacts with macromolecules in membranes of microorganisms and algae. This enhances destructive reactions between disinfecting agents and living cell membranes.
- Size reduction of particles due to the WI core configuration minimizes the adhesion of living cells on particles. This increases exposure of these cells to disinfecting agents.

## Uses of the PTH Water Improver

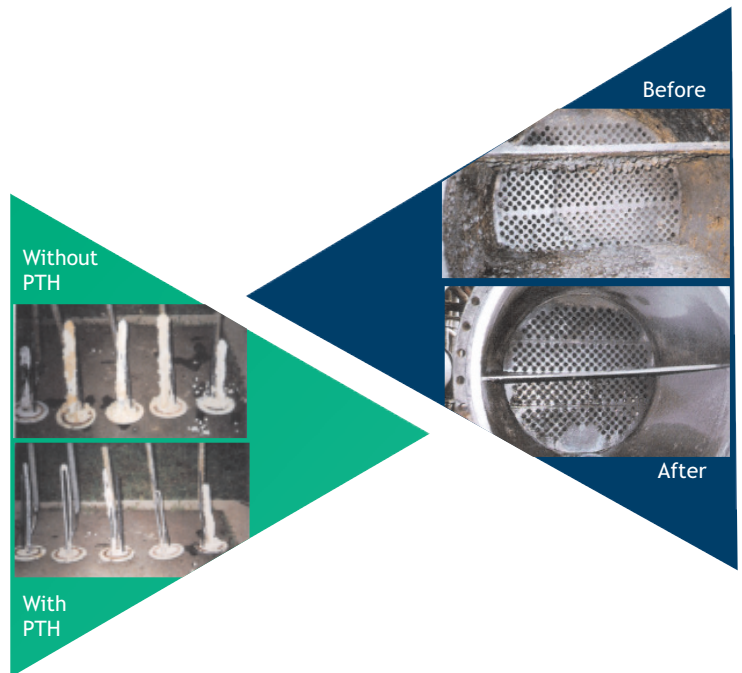
### Industrial Uses

#### Heat Exchangers and Cooling Towers

- Prevents clogging and wear and tear of system
- Reduces down time for maintenance
- Reduces consumption of energy due to peak performance of industrial equipment

#### Cooling Pads

- Improves ventilation
- Improves humidity and temperature control
- Improves Micro Climate for the plants



### Domestic Uses

- Prevention of clogging of pipes and taps - Higher water pressure and supply level
- Reduction of scale in boilers - Higher temperature of water
- Greater efficiency of solar energy systems
- Cost Saving on electricity/gas, maintenance, etc.

### Agricultural Uses

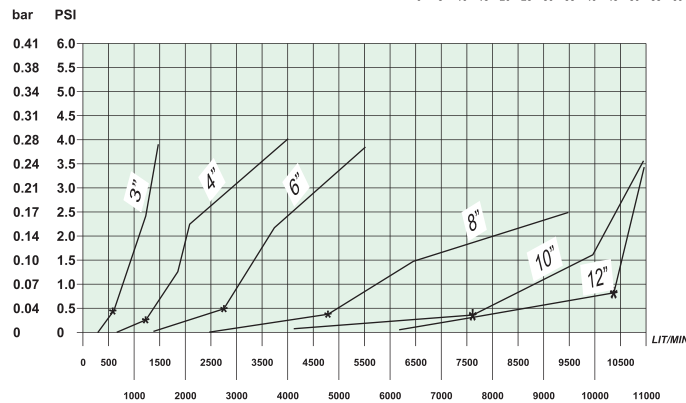
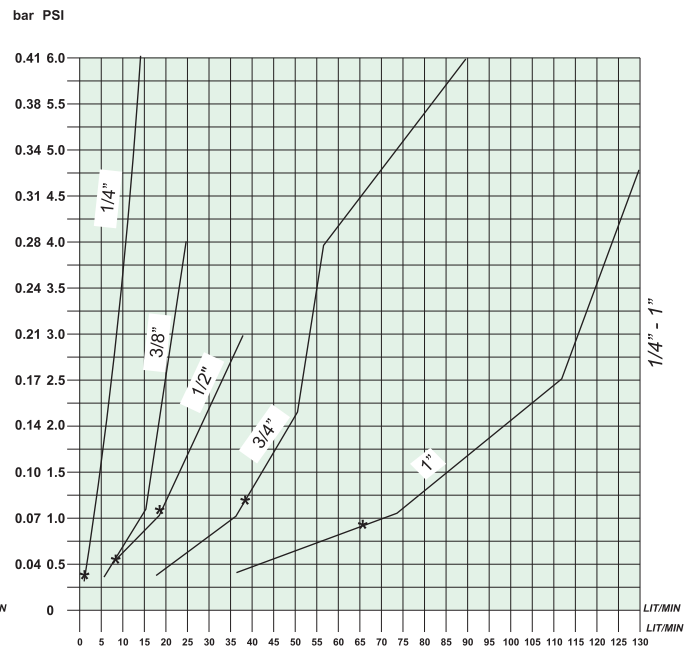
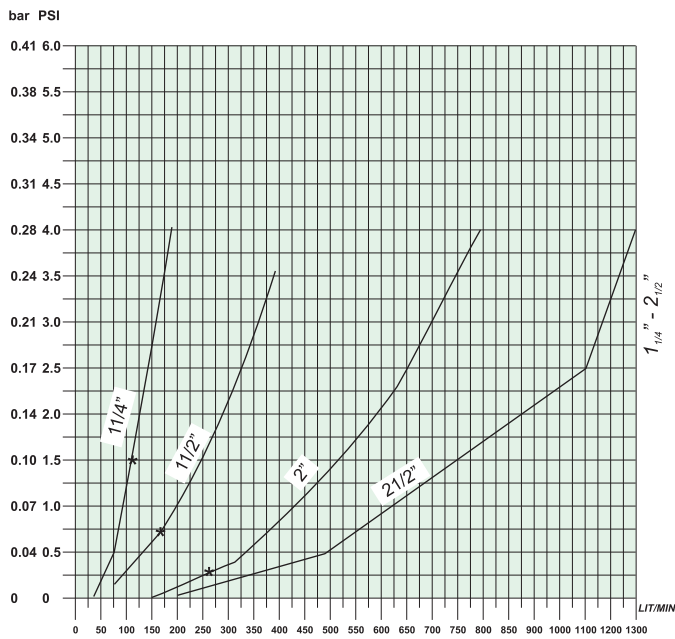
- Prevents scale in drippers, sprayers and sprinklers, thus enabling uniform growth and equal supply of water
- Scale and algae prevention in cooling pads eliminates the need for cleaning chemicals and allows maximum utilization
- In places like chicken coops, prevention of scale in water carrier sealers (cups, bells and drippers) with prevents leaks, wetness, flooding and spreading off diseases.

### Commercial and Institutional Uses

- Cost Saving, water, chemicals/salts/disinfectants, energy, maintenance time, etc.
- No need to shut down the systems like swimming pools for cleaning purposes.
- Reduction of system wear and tear
- Prevention of algae in ponds and swimming pools



# Pressure Drop Chart



# Product Range and Technical Specifications

Code	Size (In)	Connection	Weight (Kg)	Length (mm)	Recommended Flow Rates (Lit./min.)		
					Minimum	Nominal	Maximum
Boiler inner core	3/4" (Domestic)	B.S.P. Thread	0.28	150	6	12	18
Boiler inner core	1/2" (Domestic)	B.S.P. Thread	0.17	138	4	8	12
* P.T.H. MINI	3/4" (Domestic)	B.S.P. Thread	0.28	119	5	10	15
P.T.H. 6	1/4"	B.S.P. Thread	0.19	164	2.5	5	7.5
P.T.H. 10	3/8"	B.S.P. Thread	0.37	190	5	10	15
P.T.H. 15	1/2"	B.S.P. Thread	0.63	212	7	14	21
P.T.H. 20	3/4" A (Domestic)	B.S.P. Thread	1.05	231	10	20	30
P.T.F.	3/4" - 1" (Dom.)+Filter	B.S.P. Thread	1.6	134	8	16	24
P.T.L.	3/4" (Dom.)+Filter	B.S.P. Thread	2.1	308	10	20	30
P.T.H. 20	3/4" B (Industrial)	B.S.P. Thread	1.78	271	22	45	68
P.T.H. 25	1" (Industrial)	B.S.P. Thread	2.5	318	30	60	90
P.T.H. 32	1 1/4" (Industrial)	B.S.P. Thread	4.2	374	55	110	165
P.T.H. 40	1 1/2" (Industrial)	B.S.P. Thread	6.5	423	76	153	230
P.T.H. 50	2" (Industrial)	B.S.P. Thread	10.3	471	125	251	377
P.T.H. 65	2 1/2" (Industrial)	Flange	24.5	483	132	265	398
P.T.H. 75	3" (Industrial)	Flange	43.5	611	335	450	675
P.T.H. 100	4" (Industrial)	Flange	45	635	372	745	1118
P.T.H. 150	6" (Industrial)	Flange	119	815	782	1565	2348
P.T.H. 200	8" (Industrial)	Flange	263	1014	1400	2800	4183

## Water Improver - An Innovative Approach

Water Improver has been successfully installed in more than 22 countries across the world, including Germany, Japan, France, and Gulf countries.

- Prevents Scale and Rust formation
- Protects valuable equipment from wear and tear
- Reduces operations and maintenance cost
- Retards growth of microorganisms and algae
- Functions without electricity or chemicals and has no moving parts

The innovative devices of Water Improver are imported by Anant Udyog exclusively from Israel.

### About Us

Anant Udyog has been into the field of turnkey water management projects for more than a decade. The proprietor, Nirmal Mehendale, is a technocrat turned entrepreneur with an experience of over 35 years in the industry.

Along with our associate company, Anant Consultants & Engineers, we form a synergy which gives the highest quality of products and services for Designing, Manufacturing, Erection, Commissioning, Servicing, Sourcing and Product Development. Our dedicated team strives to give our customers the best quality of products and services at competitive prices.

Contact us for information regarding Water Improver and other products and services for Water and Wastewater Management, Hazardous waste management and pollution control.

Anant Udyog

P. No. 31, Sector -5 (Pocket -1),  
Mujessar Railway Crossing,  
Faridabad -121 006  
Haryana, INDIA



**ANANTUDYOG**  
[www.anantudyog.com](http://www.anantudyog.com)

Phone/Fax:  
+91 129 226 1852 / 228 6268

Email:  
[info@anantudyog.com](mailto:info@anantudyog.com)

Website: [www.anantudyog.com](http://www.anantudyog.com)